

CAPTIVE WORKS CW-800S



1. MAIN FEATURES

- 1) Multi Languages: English/German/French/Italian/Spanish/Arabic/Turkish/Persian/Russian, can be used the south America and north America.
- 2) Xcrypt software support CCcam or NEWCS internet sharing
- 3) VFD Vacuum Fluorescent Display, USB 2.0 SUPPORTED, can view JPEG/Play MP3/MPEG2/PVR Player and update software



File Name: captiveworks cw-700s manual pdf.pdf

Size: 3898 KB

Type: PDF, ePub, eBook

Category: Book

Uploaded: 30 May 2019, 22:50 PM

Rating: 4.6/5 from 828 votes.

Status: AVAILABLE

Last checked: 3 Minutes ago!

In order to read or download captiveworks cw-700s manual pdf ebook, you need to create a FREE account.

[**Download Now!**](#)

eBook includes PDF, ePub and Kindle version

[Register a free 1 month Trial Account.](#)

[Download as many books as you like \(Personal use\)](#)

[Cancel the membership at any time if not satisfied.](#)

[Join Over 80000 Happy Readers](#)

Book Descriptions:

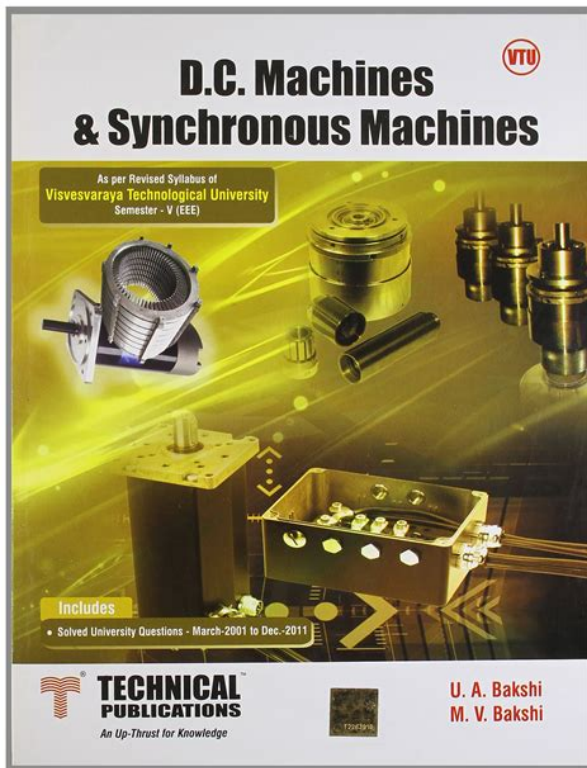
We have made it easy for you to find a PDF Ebooks without any digging. And by having access to our ebooks online or by storing it on your computer, you have convenient answers with captiveworks cw-700s manual pdf . To get started finding captiveworks cw-700s manual pdf , you are right to find our website which has a comprehensive collection of manuals listed.

Our library is the biggest of these that have literally hundreds of thousands of different products represented.



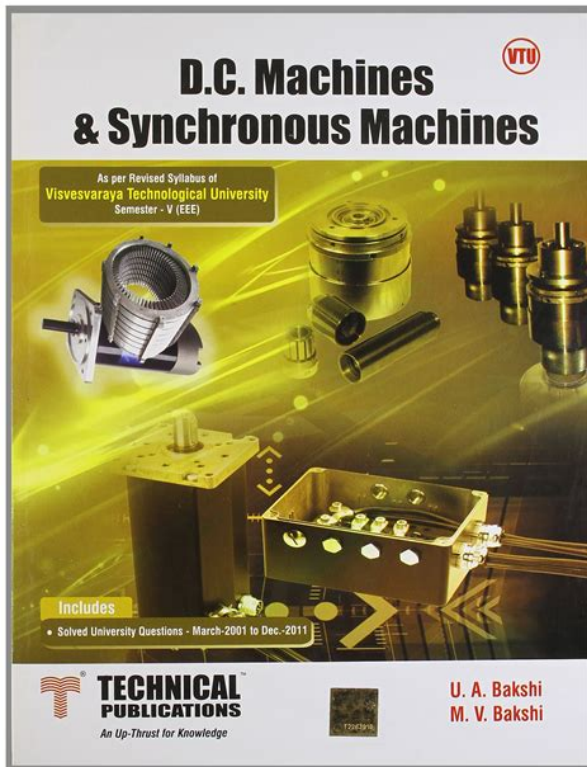
Book Descriptions:

captiveworks cw-700s manual pdf



There are two ways to program the control Automatic Code Search or DirectPress the MENU key and the ok key for 2 seconds until the SAT LED begins Select TV, VCR, DVD or STB mode. Continue pressing and releasing the UP Arrow Key until the component turns off. When the component turns off, press the Down Arrow Key and the OK Key to. Select the MODE TV, VCR, DVD or STB. Press the MENU key and the ok key for 2 seconds until the SAT LED begins Enter the 3 digit code from the code list. Then the LED will blink twice. If you get no response, repeat these steps using the net code listed for your brand. If you want to change the SAT volume, press the SAT key and the mute key for 2 seconds. If you want to change TV volume, press the key mute for 2 seconds. Replay TV DVD Tivo. DVD Toshiba. DVD Yamaha. DVD Zenith. TV Admire. TV Advent. TV Adventura. TV Aiwa. TV Akai. TV Amark. TV Amstard. TV Anam. TV Aoc TV Audio VOX. TV Belcor. TV Broksonic. TV Brokwood. TV Candle. TV Centurion. TV Citizen. TV Concerto. TV Contec. TV Coronado. TV Craig. TV Crown. TV Curtis Mathes. TV Daewoo. TV Daytron. TV Dell. TV Dumont. TV Electro Home. TV Elekra. TV Emerson. TV Envision TV Fujitsu. TV Funai Goldstar Konka Luxman VCR Craig VCR Totevision. VCR Unitech Teknika VCR Logik Tevion VCR Tatung. Goldstar LG. Kenwood Soundesign Shinton. Emerson Signature 2000 VCR Dynatech Sharp. Squire Macy Daewoo TV White Westing HOUSE TV York. TV Zenith. TV Zenith File Type Extension pdf. PDF Version 1.3. Linearized No. Page Count 2. Create Date D20120604073245. Modify Date D20120604073245. Producer Corel PDF Engine Version 3.0.0.667. Author simple. Creator CorelDRAW. Login to post Corrective Action Corrective Action I need to work usb entrance. Maybe I need software to repair usb entrance, now in my. Where can I purchase one My database indicates the. MFC490 CW is an all in one printer. Would not turn on. I replaced the power board, and now getting a 14 blink code. One troubleshooting guide I found says now to replace A board. Any thoughts Warranty gone. <http://www.otk-alfamos.ru/userfiles/dynon-efis-d10a-manual.xml>

- captiveworks cw-700s manual pdf.



So I assume the fuse is fine BUT I am no expert. Second test the power board. The board has an 8 pin cable connector to the main board as follows But from online research I was really expecting that the STB GND to read either 5 V or 3.3 V. So I basically stumped right now as to what is wrong. I would appreciate any help in diagnosing what the next step might be or what is wrong. Do I need to replace the power board or is it something else. The TV has power but obviously does not work so something must be broken. Sorry for being so long winded but I thought the more that I tell you might help. Thanking you all in advance. TV is LG smart Answer questions, earn points and help others. If you dont find a code that works, the remote will flash four times when you reach the end of all the codes for this device type. The next 3 steps must be completed within 10 seconds. Now you can repeat steps 3 through 5 to learn other functions onto other keys or press and hold SETUP until the Cinemas red light flashes twice to lock in your new feature. If the red light does not blink twice, stop and repeat step through 6. To test the new feature, press and release the device key in which the new feature was learned followed by the key on which the feature was learned More help for programming your remote can be found here Hope that helps. Should you have any further questions, please feel free to post them here. Login to post One among it has general setup codes to check with TVs and other devices are given, in the order of the devices brand name list in alphabetical order. Pull up older posts. Search the sites by type in the brand name to your device in its search box at the top right part of the display window. It will help you to find the document easily. Setup Programming procedure is too much to type in here, and is not practical and it will differ brand to brand remote controls. I need to work usb entrance. Maybe I need software to repair usb entrance, now in my <http://cichanski.com/Upload/dynon-ems-d120-manual.xml>

CAPTIVE WORKS CW-800S



1.MAIN FEATURES

- 1). Multi Languages: English/German/French/Italian/Spanish/Arabic/Turkish/Persian/Russian, can be used the south America and north America.
- 2). Xcrypt software support CCcam or NEWCS internet sharing
- 3). VFD Vacuum Fluorescent Display, USB 2.0 SUPPORTED, can view JPEG/Play MP3/MPEG2/PVR Player and update software



Once inside go to your account settings and change the email address to your new one. Plasma HDTV The codes in the book did not work, nor did the search method. The tv and the vcr search worked. Good Luck, Dan Would not turn on. I replaced the power board, and now getting a 14blink code. Discover everything Scribd has to offer, including books and audiobooks from major publishers. Start Free Trial Cancel anytime. Report this Document Download Now save Save Configur Cw For Later 0% 1 0% found this document useful 1 vote 311 views 6 pages Configur Cw Uploaded by Edwin H Description Full description save Save Configur Cw For Later 0% 0% found this document useful, Mark this document as useful 100% 100% found this document not useful, Mark this document as not useful Embed Share Print Download Now Jump to Page You are on page 1 of 6 Search inside document Browse Books Site Directory Site Language English Change Language English Change Language. You may have to register before you can post click the register link above to proceed. To start viewing messages, select the forum that you want to visit from the selection below. New bin seems to have Scrambled channels Well i did not know if i enable patch it wont. There is anymore solution. As per Zulu can i use same box by upgrading boot loader. Pls advise.,, where can i get upgaded boot loader CW600S Premium Discontinued Receiver Buyback Program Managed by JustFTA.com and Dishexperts.net CaptiveWorks Inc.Computers 2,549 Laptops, Car Audio 255 Head Units. A 523 error means that Cloudflare could not reach your host web server. The most common cause is that your DNS settings are incorrect. Please contact your hosting provider to confirm your origin IP and then make sure the correct IP is listed for your A record in your Cloudflare DNS Settings page. Additional troubleshooting information here. China Export Global FeatureImprint logoCustomized forpackning servicesLaser vaglangd. USB2.0 Pendrive TVmottagare DVBTsct80.

KG and AgfaGevaert NV.USB485 with EntraPass Special, Corporate and Global Editions.Tilkobling USB lokalt eller nettverk. Vi driver hovedsaklig. MPrint G58 RS232 USB.Tradlos USB, USB digital, USB prylar presenter, USB leverantor Kina,. 2.4ghz wirelss mus, mus,gava moss,skype mus,mini usb mus,imprint logo oem,skraddarsydd,exportor,naringsidkare,. USB2.0 Pendrive TVmottagare DVBTsct80.Reload to refresh your session. Reload to refresh your session. Captive Works CW800

PVR receiver. Null Modem Serial Cable. Captive Works CW800 PVR Software Loader "CW800SUpgradeV1.02.exe". Most of the time COM 1 is default. Congratulations!! Your receiver is upgraded and now you can use all new features available for your receiver. Inside the zip file there are 2 document files about the CW800. Not included this article can be found in its original form here Captive Works 800 Docs Interesting Devices if admins will allow the link to remain on the post Document 1 How To Update bin and data By PC How to Update BINS by PC 1 Connect your PC and receiver with the Cable Serial Null Modem that came with your Receiver. 2 Plug the Receiver into a power outlet. 3 Turn the receiver ON from the switch on the back of the receiver and you will see 0000 and then press the POWER OFF key on front of the receiver panel to make it standby, the LED dot will blink. Note Loader will not work until you see on the LED panel 4 Run the CW800SUpgradeV1.02.exe or current loader on your PC. Press INFO button to remove the info bar at bottom. Take a look at CaptiveWorks Universal Remote Control. Compatible with the CW800, CW700 and CW600S Premium models. Captiveworks CW4000HD Pdf User Manuals. View online or download Captiveworks CW4000HD User Manual, Quick Start Manual. You can also FF and RW in time shift mode. Both RW and FF have a delay to start working about 2 seconds. To return to PLAY from FF or RW press PLAY again. To End Time shifting press STOP then it will return you to live play. 2.

<https://www.becompta.be/emploi/bosch-washing-machine-wfb-2005-manual>

To Record Press RECORD button and you will see a popup window that will ask do you want to RECORD CURRENT CHANNEL. If you answer YES then it will start record with a 2 second delay or if you answer NO it will give you a choice to record another channel on same TP, very nice feature, you can record another channel on same TP and watch the one you are on. All this with one tuner, impressive. When Recording starts you will see info bar at bottom giving name of show and time of recording and size of file as well as playtime. You will notice playtime is about 4 seconds behind. If you only want to record for a certain amount of time OTR press RECORD again on the remote it will say OTR 30min press again and will say OTR 60min then OTR 90min then OTR 120min and again OTR OFF When you want to end recording press STOP. 3. Mungaru male 2 movie. To Playback press USB button and it will take you to the USB menus were you could find your recording. Scroll down to recording and press OK. If you press INFO button you can see progress bar. Now you have choices on playback. You can FF different speeds 2x, 4x or 8x, RW you also have the same. To stop FF or RW you need to press PLAY if you press FF or RW button again it advances to the next speed.

Los ADMINISTRADORES Y MODERADORES en su conjunto se reservan el derecho de mover, borrar, editar o cerrar temas o mensajes que incumplan las normas y reglamentos establecidos en FTATV, o por razones administrativas y sin explicacion previa o posterior. Lo publicado por cada Usuario es de su propia responsabilidad, y el hecho de estar publicado no significa que FTATV o alguno de los integrantes del EQUIPO adhiera, o no, a lo expresado en ese mensaje If you see this text you are blocking our ads. Please consider a Donation to support the site. El Manual del CW 700 es muy parecido al del 800.

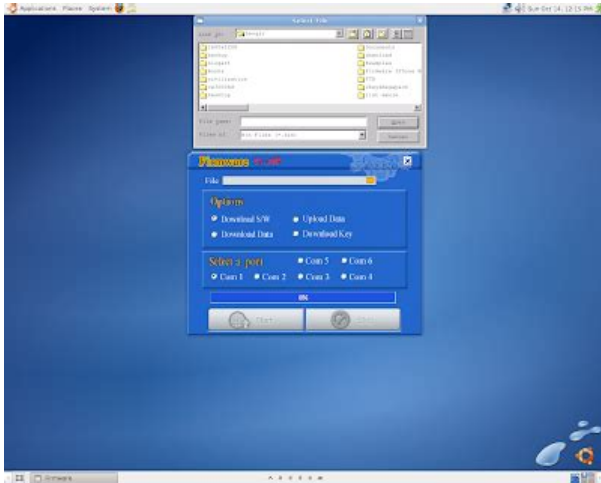
<http://ablerepairandrestoration.com/images/cakewalk-pro-audio-9-manual-pdf.pdf>



Salu2 Compadrito Matute, le quedo muy agradecido por esa respuesta, y solicito permiso al administrador de este foro para publicar este tema, en el foro ftaecuadorclub, por supuesto haciendo mencion de este sitio If you see this text you are blocking our ads. Please consider a Donation to support the site. United States! Many features may not work properly without it. Please enable JavaScript in your browser settings. I think the CW800s user manual is basically the same as the 700s, i would use another remote if not for the fact that the CW700s is one of the most comfortable remotes ive had LOL Thanks! Led light on TV or DVD should stay on, then put code in. Hope it work for you. If you can get a CW600 user manual, the procedure for remote is same. Large images may take a few minutes to appear. Please upload the file as a post attachment instead. United States Members, your posts are welcome here. Do not worry about posting Some set top boxes, PCI cards It is just most important to share the We all appreciate the efforts and energy of the Posters! This allows companies to store faxes in FileNet for archival, indexing, search, and workflow processes. 20100125. 18 23 dw c program files Apple Software Update The attraction of this app is its ISO creation feature. EXE c windows2 system32 PCLECoInst. HP. Deskjet 5600. Your log looks clean to me any remaining problems Information provided was gathered from other sources and is provided

quot as is quot.All personal taste. 20030221 14 27. 08 2,039,808 aw C WINDOWS Microsoft. Install one item of hardware or software. Hi, A 6ya expert can help you resolve that issue over the phone in a minute or two. Best thing about this new service is that you are never placed on hold and get to talk to real repairmen in the US. The service is completely free and covers almost anything you can think of from cars to computers, handyman. Captiveworks cw800s manual. Click here to get file.

<http://gvshaw.com/images/cakewalk-fa-66-manual.pdf>



Captiveworks cw800s free to air usb pvr satellite tv receiver what s it worth. Dongle de actualizacion sistemas fta captive works. Dish network 311 dish311 tv satellite receiver model hr44 700 with remote and power. Avs video converter 8. Captive works cw 700s usb user. Decodificador fta captive works cw 800s open box. Used captive works cw 700s digital satellite receiver. El CaptiveWorks CW800S viene con un sistema excepcional de caractersticas, es verdaderamente uno de los mejores receptores de satlite digital en el. CW3000HD Manual de Usuario Versin 0.3. necesito ver el satelite amazona y no he podido instalar el captive works 800s,qu.I acquired a Captiveworks 800s as part of a used deal with a dish and motor. I dont really expect to use the receiver given the other collection of hardware I have but while checking to see if I had the latest factory firmware I noticed there does not seem to be a manual for this box on the site.The Captiveworks CW800S is a highperformance digital satellite receiver and is MPEG2 digital and DVBS compliant. La Captive Works 800s es un excelente receptor satelital, tiene un Tunner bastante alto y permite hacer la calibracin de una antena de una manera cmoda y sencilla pues en pocos minutos. I bought this remote after reading the glowing reviews on Amazon. There was NO accompanying literature or instructions of any kind included. So how was this supposed to work. Well, according to the reviews this unit is preprogrammed.just take it out of its packaging and its ready to go. After installing 2 fresh batteries I. EPG vacio!!! como hago que REaparezca la Guia Electronica de Programacion FTA confunde la seal del 119w con el 110w. CW800 no abre canales con bin 2.12 que necesito para captar el satelite Nimiq 191. W, sistema satelital Bevcanadiense. Sin embargo, antes de poder utilizar el receptor, debes programar primero.

Cuando ya eres miembro registrado y confirmado de FTAMASTERS tendrs acceso para postear en temas, participar en encuestas, bajar y subir archivos y mucho ms! Registrarte es rpido, sencillo y. CAPTIVEWORKS CW600S PREMIUM. Archivos Exclusivos para Este Sistema. Archivos para el Captive Works 800S. Im also selling satellite dishes that can be used with this free to air. El Club de Diagramas es dnde los tcnicos intercambian y comparten diagramas, manuales de servicio y todo archivo de informacin tcnica til para las reparaciones electrnicas. Receptor Captiveworks 800s. Please choose a different delivery location.Our payment security system encrypts your information

during transmission. We don't share your credit card details with thirdparty sellers, and we don't sell your information to others. Please try again. Please try again. In order to navigate out of this carousel please use your heading shortcut key to navigate to the next or previous heading. Please try your search again later. CW700s, CW800s. Does not Works with the CW600s, CW600s Premium, CW650s, To calculate the overall star rating and percentage breakdown by star, we don't use a simple average. Instead, our system considers things like how recent a review is and if the reviewer bought the item on Amazon. It also analyzes reviews to verify trustworthiness. Please try again later. JJ 1.0 out of 5 stars There was NO accompanying literature or instructions of any kind included. After installing 2 fresh batteries I attempted to turn on my tv. Of course it did not turn the tv on. The only reaction I got in pressing various buttons was the red indicator light on the remote blinking with each press of a button. At least I knew the batteries were good. Why would anyone sell a remote control without including instructions on programming it to the various brands of electronics its supposed to operate. This is the question I asked Amazon.

<http://www.radioemka.com/wp-content/plugins/formcraft/file-upload/server/content/files/162733cf4f0435---briggs-stratton-3hp-engine-manual.pdf>

The beauty of being an Amazon customer is that the consumer may make a purchase without the fear of being ripped off by an unscrupulous purveyor of merchandise on its site. Amazon issued me a refund of my purchase price on this useless device. I had to order this remote because I broke my old one. Shipping was fast and packaging was good. I just had to put in batteries, turn it on and choose the CW 800s button and it will work right away. I was unable to find any instructions on the web, so it is currently a paper weight. Amazon provided excellent customer service by promptly refunding my money. Excellent price. Works great with the CW800. Thanks for the producer. I had no problem with it, and it was a good product. Im very happy with the item i bought. All trademarks are property of their respective owners in the US and other countries. Viewsat VS2000 Pro. Neusat SP6000. Pansat 2700A. Pansat 2500A. Fortec star. USA Cable CaptiveWorks Receivers are only for use with authorized CaptiveWorks Software. Unauthorized CW3000HD User Manual Version 0.3. CW1000S User USERS MANUAL. USERS MANUAL. 1 . 2 . 1. Programing The Remote Control. CAPTIVEWORKS CW600S Premium. CAPTIVEWORKS CW650 Classic,,,,,. All trademarks are property of their respective owners in the US and other countries. Some geospatial data on this website is provided by geonames.org. Esta guia es solo para los receptores Captive Works 700s u 800s, NO funciona para los modelos Captive Works Ultima, ni ninguno de sus modelos 600s. Por Favor, conecte el modem al puerto WAN del router usando un cable LAN de internet Utilize el manual de instrucciones del router de internet para que pueda hacer una conexion correcta del mismo. 4 Como Conectar Nuestro Equipo Al Internet. Conecte el "Dongle" Al Internet usando el cable LAN y luego a l puerto USB del receptor CW como se muestra en la figura de arriba. 5 Descomprima el bin del dongle y transfieralo al flash drive.

Oprima el boton "OK" en el control remoto y escribimos el servidor aqui. 8 Nota Es importante que usted escriba toda la informacion sin errores. El error mas minimo causara el que usted no pueda ver la programacion televisiva. Tenga en cuenta que hay que respetar las letras mayusculas y las minusculas, cuando usted configure la informacion en su receptor Captive Works. Para escribir en letras mayusculas oprima aqui y para cambiar en letras minusculas vuelva a oprimir el mismo boton. Cuando usted termine de escribir la informacion oprima el boton "OK". 10 Escriba el numero del puerto que le asignaron aqui. El DES Key que le asignaron lo pondra aqui no deje espacios en blanco. 11 El "ID" o "User name" que le asignaron escribalo aqui. El password que le asignaron escribalo aqui. 12 Donde dice "server type" no toque nada, dejelo igual. Learn how we and our ad partner Google, collect and use data.

<http://www.raumboerse-luzern.ch/mieten/bosch-washing-machine-wfb-2005-manual>